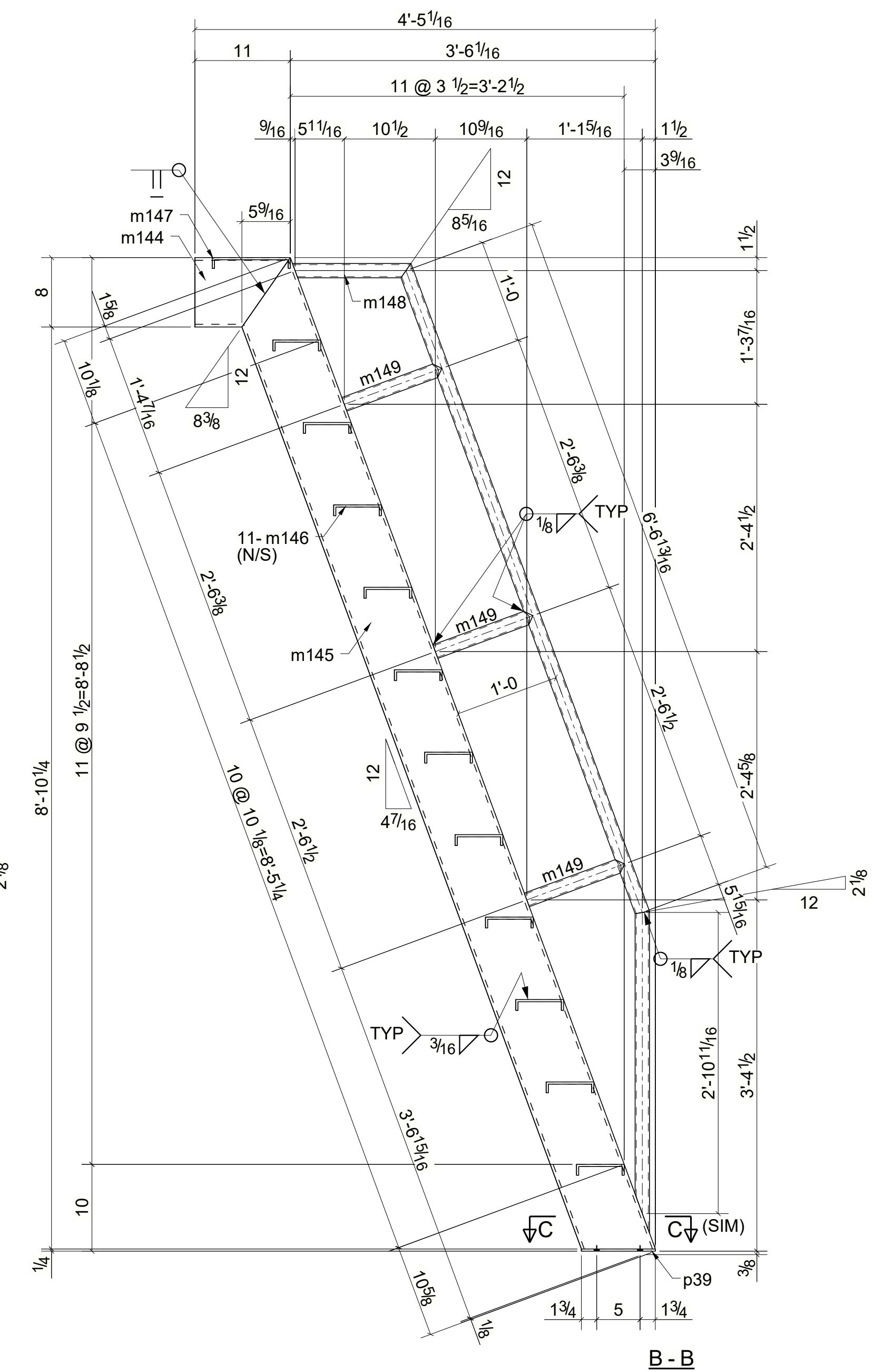
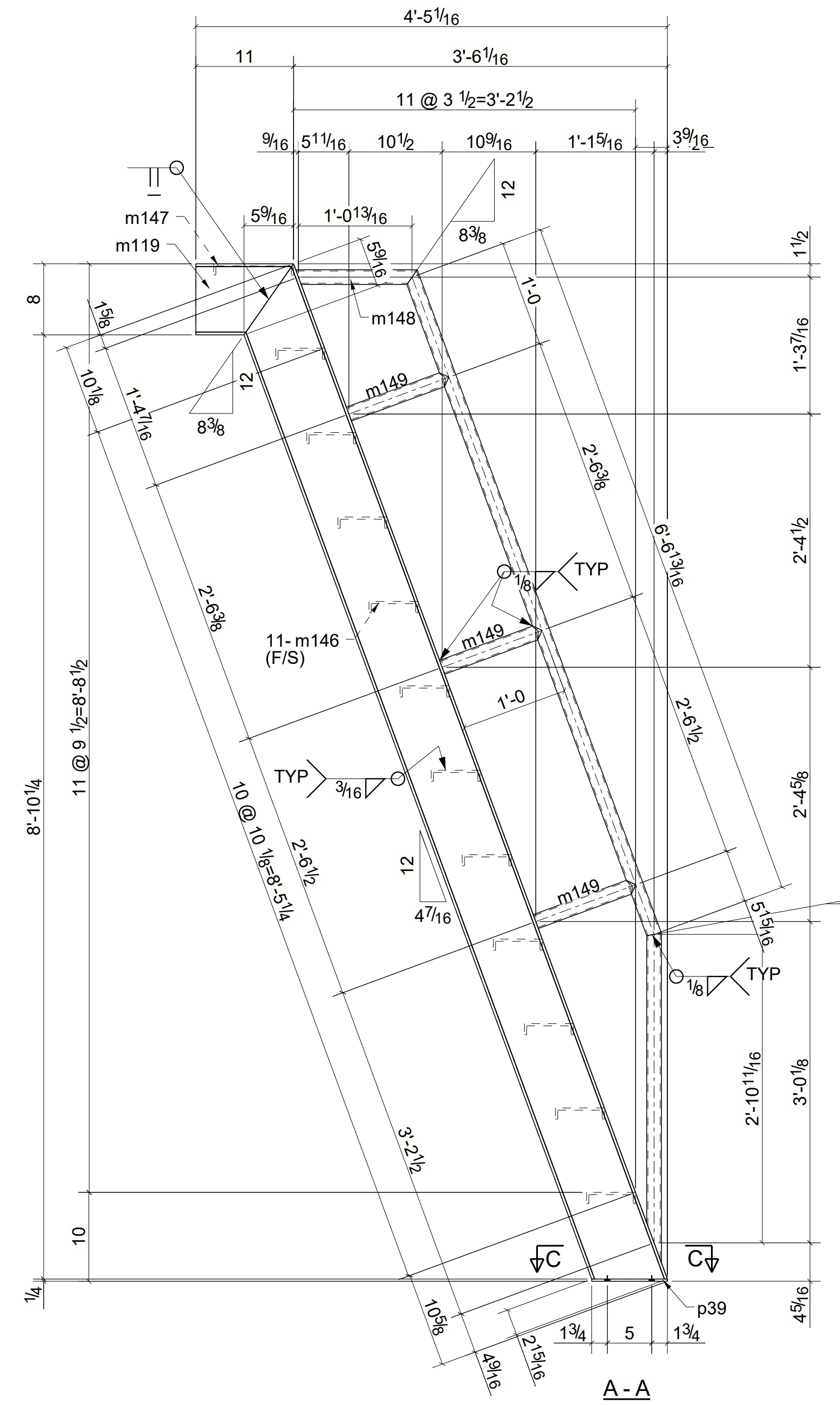
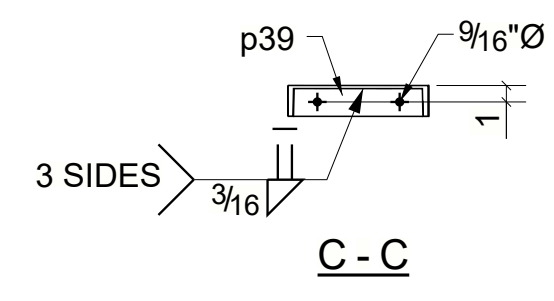
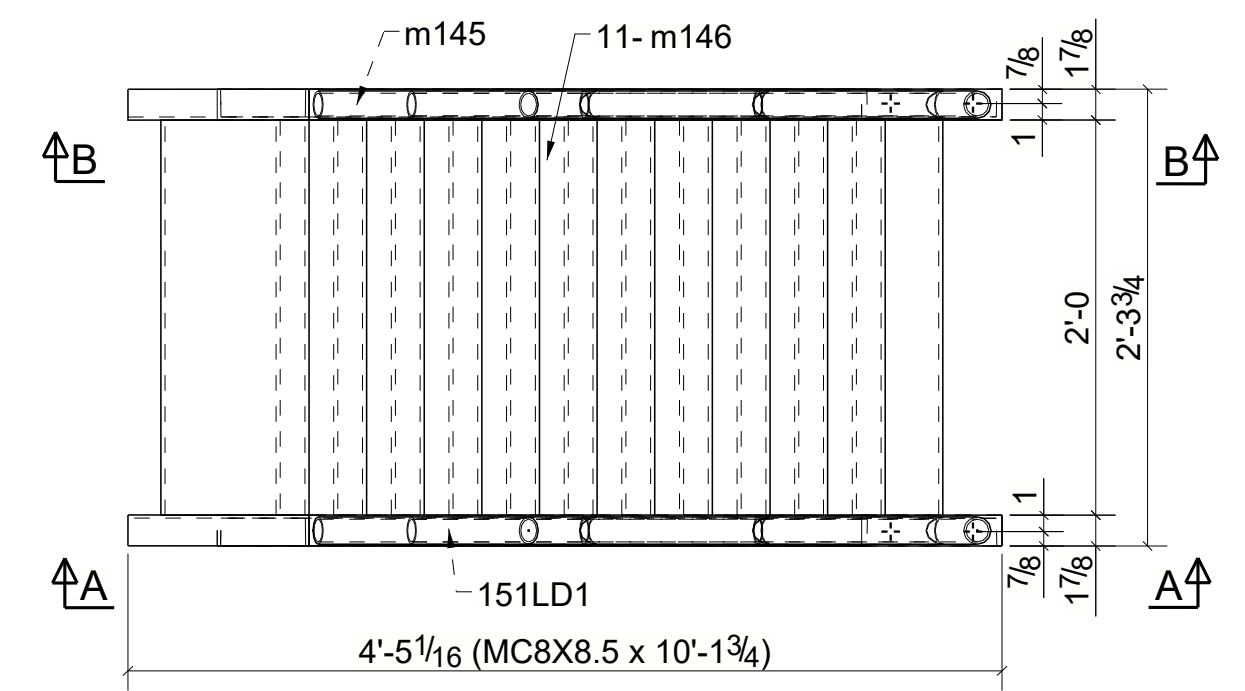


JOB NO.						SHEET
PAINT: 1-S/C PRIMER						151
SHIPPING QUAN.	QUAN.	PIECE MARK	DESCRIPTION	LENGTH	WEIGHT	REMARKS
1	1	151LD1	SHIPS_LADDER			
	1		MC8X8.5	10'-1 3/4"	86	A36
	1	m119	MC8X8.5	0'-11"	8	A36
	1	m144	MC8X8.5	0'-11"	8	A36
	1	m145	MC8X8.5	10'-1 3/4"	86	A36
	11	m146	PL1/4"X8"	2'-0"	140	A36
	1	m147	PL1/4"X11 1/2"	2'-0"	19	A36
	2	m148	PIPE 1-1/4SCH40	10'-10 5/16"	47	A53-GR.B
	6	m149	PIPE 1-1/4SCH40	1'-0"	13	A53-GR.B
	2	p39	PL1/4"X1 7/8"	0'-8 1/2"	2	A36
TOTAL WEIGHT THIS DRAWING					409	
ERECTION BOLTS						
151LD1 BOLT QTY'S ARE FOR ONE ASSEMBLY ONLY						
MARK	QTY	BOLT DESCRIPTION	GRADE	SITE/WORKSHOP		



ONE - SHIPS_LADDER - 151LD1

GENERAL NOTES:

- All Holes $\frac{13}{16}$ Ø Unless Noted.
- Finish 1-S/C PRIMER
- Seal Weld With $\frac{1}{4}$ " Fillet.
- Weld E70XX Unless Noted.

Ref. Dwg. _____

PRINT RECORD		
DATE	REV.	FOR
02/19/2021	0	For Fabrication

TITLE: _____

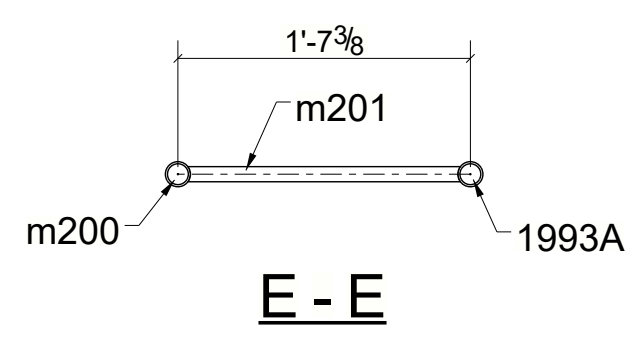
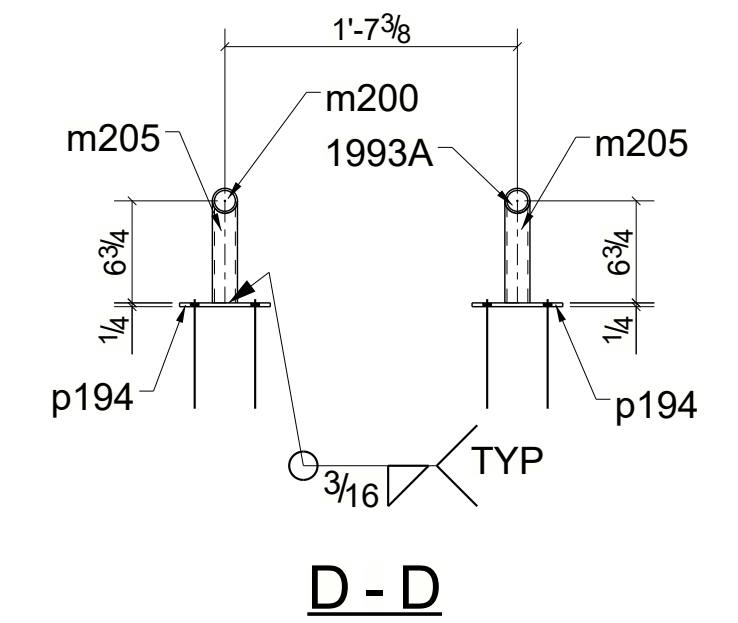
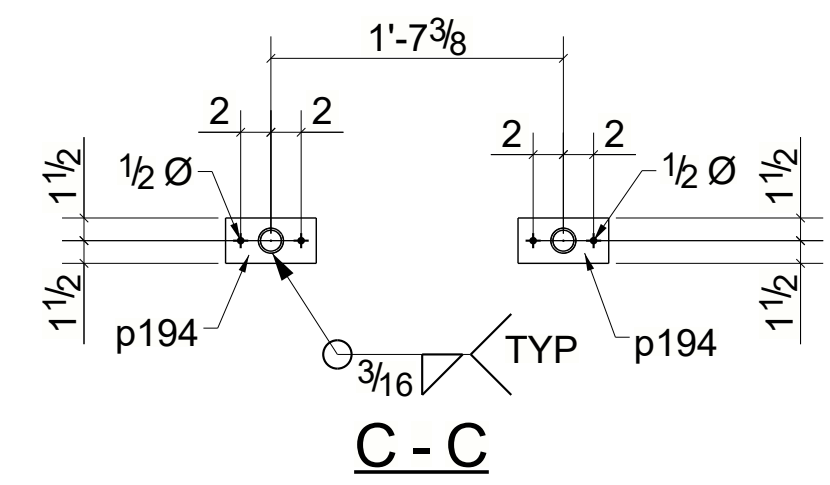
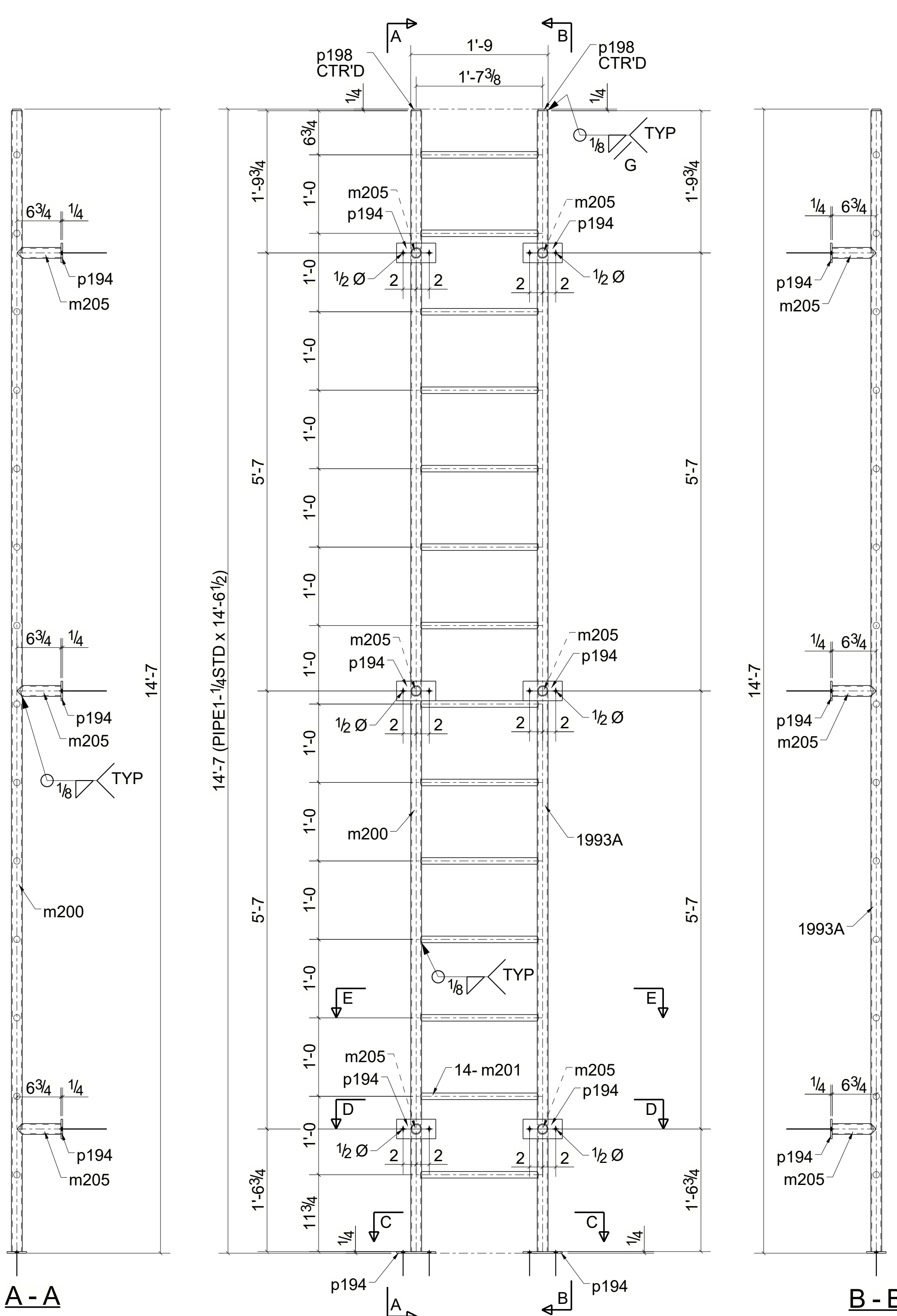
FOR: **ARCH-CON**

SCALE	DATE	REVISIONS	DATE
DRAWN BY	02/19/2021	1	
CHECKED BY	02/19/2021	2	
APPROVED BY		3	

P.O. No. _____ JOB No. _____ SHEET No. **151**

BILL OF MATERIAL

ABM	MARK	QTY	DESCRIPTION	LENGTH	CVN	WEIGHT	MATERIAL	REMARKS
			LADDER					
1993A	1	1	PIPE1-1/4STD	14'-6 1/2"		31.18	A53-GR.B	
m200	1	1	PIPE1-1/4STD	14'-6 1/2"		31.18	A53-GR.B	
m201	14	14	ROD1"	1'-6 1/16"		53.00	A36	
m205	6	6	PIPE1-1/4STD	0'-6 3/4"		7.24	A53-GR.B	
p194	8	8	FL1/4"X3"	0'-6"		10.21	A36	
p198	2	2	PL1/4"X1 3/8"	0'-1 3/8"		0.21	A36	ROUND PLATE
TOTAL ASSEMBLY WEIGHT						133.01		



0	06/10/2021	For Fabrication
A	05/25/2021	For Approval
REV.	DATE	DESCRIPTION
ERECTION DRAWING REFERENCE:		
DESIGN DRAWING REFERENCE:		
ALL MATERIAL TO BE ASTM (U.N.O.): A53-GR.B		
OPEN HOLES (U.N.O.): 13/16"		
CLEAN (U.N.O.): SSPC-SP2		
PAINT (U.N.O.): SHOP PRIMER		

- SHOP NOTES**
- BEAMS AND COLUMNS THAT BECOME BENT OR DISTORTED DURING SHIPPING, HANDLING, PUNCHING, WELDING, ETC. MUST BE STRAIGHTENED.
 - PIECE MARK LEFT END AS DETAILED ON NEAR SIDE OF MEMBER.
 - COLUMN PIECE MARK IS TO APPEAR ON THE BOTTOM OF THE BASE AND ON THE SAME COLUMN FACE AS THE DIRECTION MARK NEAR THE COLUMN BASE.
 - ⊗ INDICATES PAINT STRIPE SIDE. MARK ⊗ IN AREA ADJACENT TO CONNECTION FOR FIELD USE.
 - "RD" INDICATE RUNNING DIMENSIONS TO THIS POINT.
 - ALL FULL PENETRATION WELDS SHALL BE UT TESTED IN ACCORDANCE WITH AWS UNLESS DIRECTED OTHERWISE BY CONTRACT SPECIFICATIONS.
 - WELDING TO CONFORM TO AWS SPEC ELECTRODES: E70XX - LOW HYDROGEN.
 - DEBURR ALL HOLES U.N.O.
 - FABRICATE WITH THE NATURAL CAMBER IN THE UPWARD DIRECTION.

DETAILER:	
MADE BY:	SSP
CHECKED BY:	PBH
DATE CHECKED:	05/24/2021
DETAILS OF: LADDER	
STRUCTURE:	
LOCATION:	
SEQ	1
REV	0
JOB NUMBER	
SHEET NUMBER	1993A